

IntaChange Enterprise Installation

IntaChange Enterprise Installation

Copyright © Intasoft Limited 2004–2009

www.intasoft.net

+44 (0)1392 447780

- 1 **Overview 2**
- 2 **IntaChange Components 2**
- 3 **Requirements 2**
- 4 **Install Procedure 3**
- 5 **Uninstalling IntaChange 6**

IntaChange Enterprise Installation

1 Overview

IntaChange Enterprise is an ASP.NET application. It uses a Microsoft SQL database, and is accessed remotely using client machines through a web browser. This document describes the installation of the main IntaChange management software.

Basic user machines (“client” machines) require only Internet Explorer (Version 6 onward; at the time of writing, successfully tested up to IE 8.0) and an IntaChange account to access the “projects” defined in the main installation. IntaChange requires no installation on client machines.

The process of installing IntaChange includes several other associated software packages, such as Microsoft .NET Framework. They are included in this setup package and are installed automatically.

2 IntaChange Components

Included in the setup package:

- IntaChange.
- IntaView – optional addon.
- NetSpell.
- .NET Framework.
- MDAC (Microsoft Data Access Components).
- Microsoft SQL Server (2005) Express Edition (SQL Express). This is a free restricted version of the full Microsoft SQL Server 2005. It is suitable for evaluation purposes, or for small installations, but is not recommended for live use with a large number of users.

3 Requirements

Note: Client machines requiring standard user access to IntaChange need only Internet Explorer 6 onward.

3.1 Software requirements

- Windows 2000/XP onward. A server operating system (Windows 2000/2003 Server onward) is strongly recommended. It is possible to install on a non-server operating system (e.g. Windows XP), but there may be certain restrictions (e.g. SQL Server requires a server operating system, so either SQL Express must be used or another server machine must supply SQL Server).
- Internet Information Services (IIS) version 5.0 or later. To access the features of ASP.NET, *IIS must be installed prior to installing the .NET Framework.*
- .NET Framework version 2.0 (**DOTNETFX 2.0 is supplied as part of the installation package**); it will also run under .NET Framework 3.x onward.
- Microsoft Data Access Components 2.8 or later (**MDAC is supplied as part of the installation package**).
- Microsoft SQL Server 2005 onward, or Microsoft SQL Server 2005 Express Edition (**SQL Express is supplied as part of the installation package**). SQL Server may be supplied by a different machine on the network if desired.
- [Optional] SMTP Mail must be available if mailing from within the .NET application is desired.
- [Optional] SQL Server mailing must be configured if mailing from within SQL Server is desired. **Note:** SQL Server mailing is not supported on SQL Express.

IntaChange Enterprise Installation

- [Optional] SQL Server Agent must be running if scheduled jobs are wanted. . **Note:** SQL Server Agent is not supported on SQL Express.
- [Optional] NetSpell must be installed if spell checking is wanted (**NetSpell is supplied as part of the installation package**).
- [Optional] Microsoft Project Server 2002/Office Project Server 2003 onward must be available if integration with MS Project is desired. MS Project Server may be supplied by a different machine on the network if desired.
- [Optional] Microsoft SQL Reporting Services must be available if SRS reports are to be used.
- [Optional] Intasoft AllChange Version 8.0 onwards must be available if the integration with AllChange is desired
- [Optional] Microsoft Office InfoPath 2003 with SP1 onward. This is only required if the IntaView optional AddOn is to be used

3.2 Hardware requirements

3.2.1 Minimum hardware requirements

CPU Required	RAM Required
Pentium 1.0 GHz*	256 MB**

* Or the minimum CPU required to run the operating system, whichever is higher.

** Or the minimum RAM required to run the operating system, whichever is higher.

3.2.2 Recommended hardware requirements

CPU Recommended	RAM Recommended
Pentium 4 2.0 GHz or faster	512 MB or higher

4 Install Procedure

4.1 Running setup.

Select a machine on which to install IntaChange. The setup process may involve the installation of several other packages.

Insert the IntaChange setup disk into the CDROM drive on the chosen machine. If Autorun is enabled the setup program will run automatically. If it is not (or if the IntaChange product is not on a CD, e.g. obtained from download), to begin the installation process double-click on the file named **SETUP.EXE**.

4.2 IIS check

IIS (Internet Information Services) must be present before IntaChange is installed (or, more specifically, before the .NET Framework is installed).

The IntaChange Installation first tests for the presence of IIS. If it is already present the installation process will move straight to Installation Options (see 4.3). If it is not a warning is generated and the installation should be aborted: IIS should then be installed *before* attempting to install IntaChange again.

IIS can usually be installed by using Add/Remove Windows Components. This is found within **Start > Settings > Control Panel > Add/Remove Programs**.

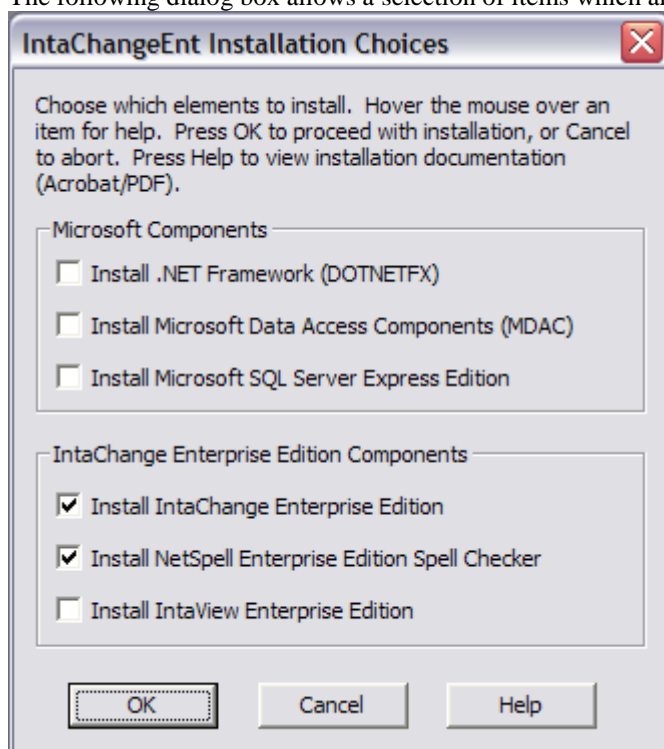
It is also possible that IIS and the .NET Framework are both installed but ASP.NET is not “properly registered” with IIS (e.g. IIS was installed *after* .NET). The Installation (does its best to) detect this situation, and offer to execute a command to rectify the situation if necessary. *Please do not ignore this situation if it arises: if you do not take the*

IntaChange Enterprise Installation

necessary action, IntaChange will install successfully but when you then try to run the application you will receive some (obscure) error message, or you will simply be presented with a page of HTML rather than the working program.

4.3 Installation Options

The following dialog box allows a selection of items which are installed alongside IntaChange:



Items are checked if the installation detects that they are required but not already present.

Software selected from the Installation options is installed in the order it is listed

4.4 .NET Framework

This is installed automatically if selected. A dialog box will indicate when the installation of .NET Framework is in progress.

4.5 MDAC

If selected, MDAC will begin to install after .NET Framework.

As MDAC requires a restart of the machine before the new changes can be applied the final screen of the MDAC installation offers to restart the machine now. **DO NOT RESTART YOUR MACHINE** at this time as IntaChange has not finished installing. The machine can be restarted at the end of the whole IntaChange installation process.

If the system is restarted at this time by error it will end the IntaChange setup. To resume the setup go back to running **setup.exe** (4.1) and run again. The installation process will detect what still needs to be installed and will indicate this on the Installation Options dialog. Continue as before.

Note: MDAC cannot be uninstalled. If IntaChange and the other associated software are uninstalled and setup is run again a brief message will appear indicating MDAC is being updated. This will have no adverse affects and IntaChange will install and run as normal.

4.6 SQL Express

If the installer did not detect any suitable SQL Server software on this machine (and it was selected on the Installation Options dialog) SQL Express 2005 will now be installed.

IntaChange Enterprise Installation

SQL Express 2005 is a cut down version of Microsoft SQL Server 2005. Upgrading from SQL Express to full SQL is a simple process easily achievable at a later date. For further information on the difference between SQL Express and full SQL Server and a guide to configuring it, see the **ReadMe.rtf** which appears at the end of the IntaChange installation.

4.6.1 SQL Express 2008

IntaChange works with SQL Express 2008 as well as SQL Express 2005. SQL Express 2008 is not supplied as a setup component with IntaChange. If you wish to use SQL Express 2008 in a similar fashion to SQL Express 2005, follow these instructions to install it (outside of IntaChange Setup):

- Download a version of SQL Express 2008 from Microsoft, e.g. **SQLEXP_x86_ENU.exe**. (This will require .NET Framework 3.5 SP1 & Windows Installer 4.5.)
- Run a command line similar to:

```
SQLEXP_x86_ENU.exe /ACTION=Install /FEATURES=SQL  
/INSTANCENAME=IntaChange2005 /SECURITYMODE=SQL /SAPWD=Intachangel  
/SQLSVCAccount=SYSTEM /SQLSYSADMINACCOUNTS="Your-Domain\your-username" /QS
```

With these options, when you come to creating an IntaChange project you can use the **Use settings for SQL Express** option.

4.7 IntaChange

The IntaChange software package itself. Once installed, IntaChange is available from a web browser via the *Virtual directory* accepted during its installation, e.g. <http://localhost/IntaChangeEnt>.

During the installation the package will offer to install **IntaChangeEnt Windows Scheduler Service** as an optional component. This component is used if you wish to run certain IntaChange functionality (e.g. mail submission processing) unattended. It does no harm to elect to install the service, even if you never actually make use of it. However, if you know you will not want it, or wish to delay its installation to a later date, or anticipate permission problems, you may elect not to do so. Even if you do not install the service at this stage, the necessary executable is still copied into the IntaChange area; you may install the Windows Service at a later date manually, as described in the IntaChange documentation.

4.7.1 .NET Framework Version 1.1

IntaChange requires .NET 2.0 onward to run correctly. *If (and only if) you have .NET version 1 on the server as well as version 2, you must perform a manual step to tell IIS that IntaChange is an ASP.NET version 2 application.* Failure to do so may (depending on your settings) result in IIS attempting to run IntaChangeEnt as an ASP.NET version 1 application, which will generate an error page as soon as you try to visit the IntaChangeEnt URL. Once you have installed IntaChangeEnt, go into **Internet Services Manager**. Locate the **IntaChangeEnt** application, right-click, select **Properties**. Then click on the **ASP.NET** tab and for **ASP.NET version** select the appropriate 2.x version rather than 1.x.

4.7.2 Crystal Reports

The package includes a Crystal Reports .NET component (for running Crystal Reports). On some systems you might experience difficulties when *upgrading* the Crystal Reports .NET package that is included with IntaChange, i.e. during an IntaChange *upgrade*. This is due to Crystal Report issues and not IntaChange or the upgrade process. If, after upgrading, you find you get an error as soon as you try to visit the IntaChange **LogOn** page use **Control Panel, Add/Remove Programs**, locate **IntaChange Enterprise** entry, select **Change** and opt for **Repair** to solve this. Alternatively, you may choose to uninstall IntaChange first (via **Control Panel, Add/Remove Programs**) and then rerun this installation, which avoids the problem.

When running certain kinds of report (specifically, either those including charts or when output is exported to another application), Crystal Reports appears to require write-access to the Windows temporary directory (default **c:\windows\temp**), and may give a strange error message if it lacks the permission. On most systems this seems to get set up automatically, but you may find you have to grant the necessary permission explicitly.

The included Crystal Reports .NET component requires a 32-bit IIS configuration. If the server is 64-bit, *and* IIS is running in 64-bit mode (i.e. not 32-bit support), you will need to install the supplied **CRRedist2005_X64.msi** 64-bit

IntaChange Enterprise Installation

support. This is located in the root directory of the distribution. **Note:** If running the Crystal Reports 64-bit version under Windows Server 2008/Vista, attempting to run *any report which includes a chart* will result in a “Fail to render the page” error message. This is a Crystal Reports limitation for which Business Objects have provided no workaround.

4.8 NetSpell

NetSpell is a freely-redistributable spell checker distributed with IntaChange. It is supplied with a number of language dictionaries. If it is installed, IntaChange will offer spell checking facilities; spell checking is performed in the client web browser. NetSpell is: “Copyright (c) 2003, Paul Welter. All rights reserved.” Once installed, NetSpell is available from a web browser via the *Virtual directory* accepted during its installation.

4.9 IntaView

IntaView is an optional add-on software package to allow customised forms to be designed for IntaChange using Microsoft InfoPath. This option will only be available if IntaView was purchased at the same time as IntaChange. Select it to install the IntaView components.

5 Uninstalling IntaChange

IntaChange can be removed via **Control Panel, Add/Remove Programs**. Note that this does *not* remove any databases which have been created (use **SQL Server Management Studio** for this, if desired, or delete projects properly first). SQL Express and other supplied packages can be removed from here too.